

USING MICROSOFT WINDOWS AUTOMATIC UPDATE TO PROTECT YOUR SYSTEM

Click on the link below for your operating system. If you not sure what operating system you are running [click here to check your operating system version](#).

[Windows 2000](#)

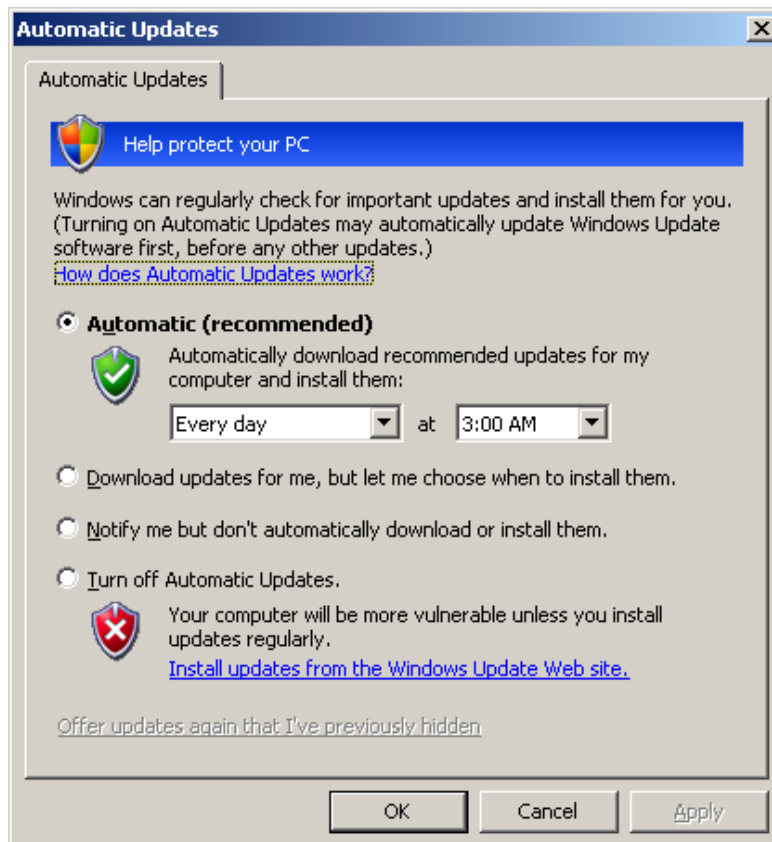
[Windows XP](#)

OPERATING SYSTEM: WINDOWS 2000

Security updates help shield your computer from vulnerabilities, viruses, worms, and other threats as they are discovered. If you are using Microsoft Windows® 2000 Service Pack 3 (SP3) or later, you can use the Automatic Updates feature to download the latest Windows security updates automatically when your computer is on and connected to the Internet. If you are not sure if you have the latest Windows 2000 service pack installed [check your operating system version](#).

Turn on the Automatic Updates feature

1. Click **Start**, point to **Settings**, and then click **Control Panel**.
2. Double click **Automatic Updates**.
3. Click the **Automatic Updates** tab and then select **Automatic (recommended)**.
4. Select the setting: **Automatically download recommended updates for my computer, and install them. (Make this setting **Every Day at 3:00AM**)** as shown below.



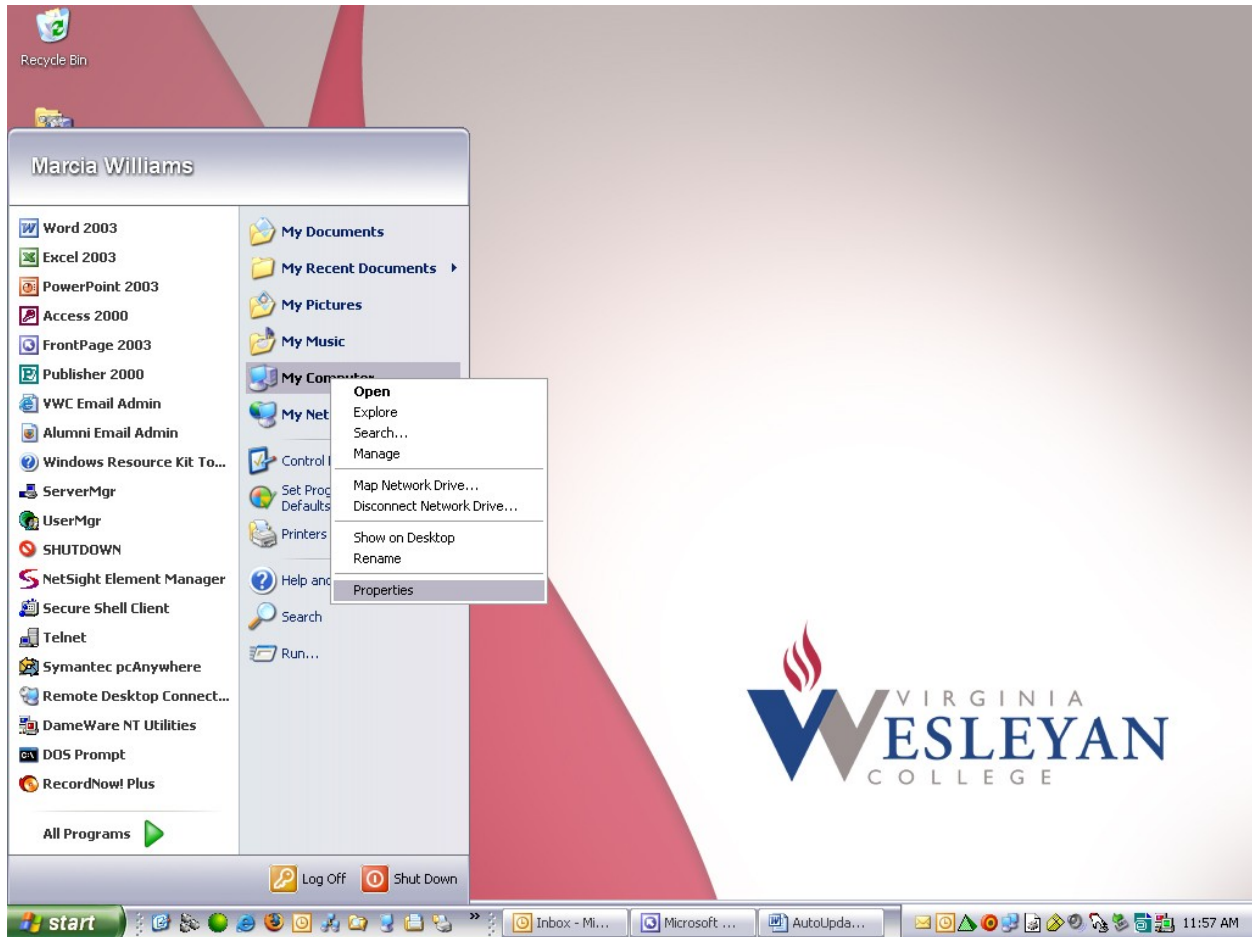
5. Click **OK**.

OPERATING SYSTEM: WINDOWS XP

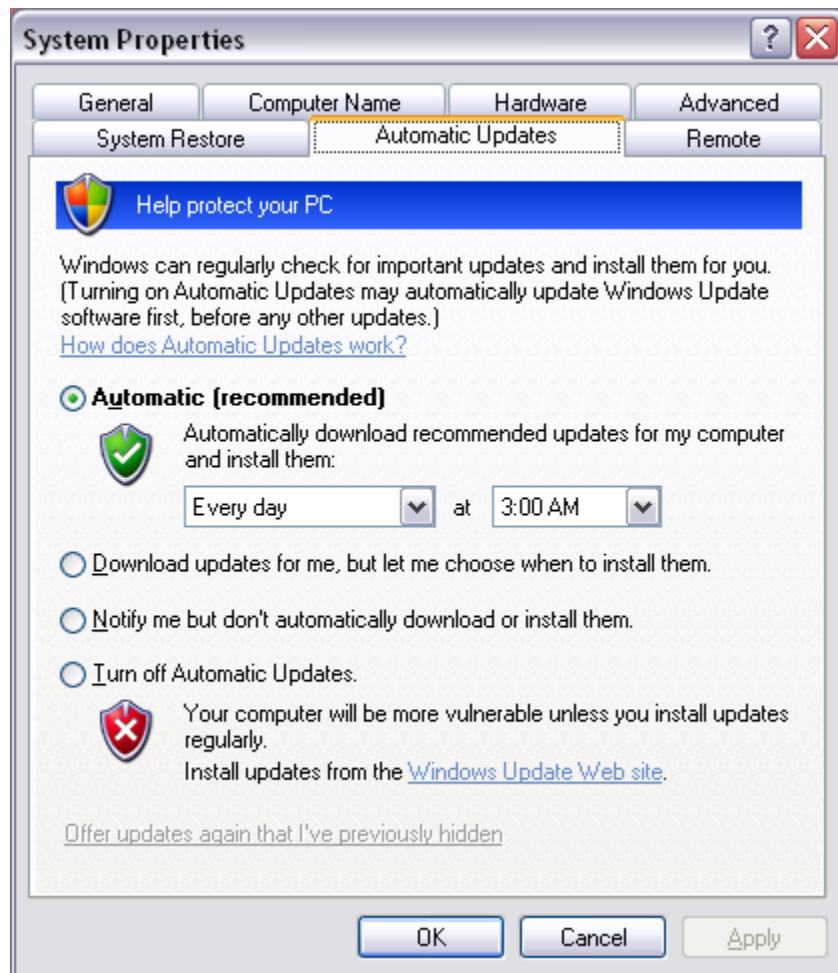
Security updates help shield your computer from vulnerabilities, viruses, worms, and other threats as they are discovered. Windows® XP has an Automatic Updates feature that you can use to download the latest security updates automatically on a schedule you choose. If you are not sure what version of Windows you are using, [check your operating system version](#).

Turn on the Automatic Updates feature

1. Click **Start**, and then right click on **My Computer**, click on **Properties**.



2. Click the **Automatic Updates** tab and then select **Automatic (recommended)**.
3. Select the setting: **Automatically download recommended updates for my computer, and install them. (Make this setting **Every Day at 3:00AM**)** as shown below.



4. Click **OK**.

FIND OUT WHICH OPERATING SYSTEM YOUR COMPUTER IS USING

1. There are many versions of the Microsoft Windows® operating system. You may be using Windows 98, Windows Me, Windows XP, or another version. To make sure you know which version is on your computer:
2. Click **Start**, and then click **Run**.
3. In the box, type **winver**, and then click **OK**.

The window (similar to one below) that appears will show you which version of Windows your computer is using.

